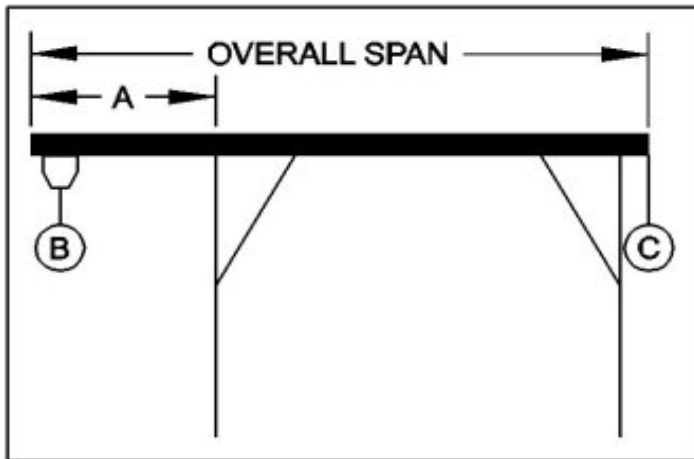




## WALLACE CRANES PORTABLE CRANE CANTILEVER CHART

GANTRY MODEL NUMBER: A2T15-A10  
 I-BEAM: A8" X 6.40#/' X 10'  
 I-BEAM LENGTH (OVERALL SPAN): 120 Inches  
 MAXIMUM CANTILEVER DISTANCE (A): 30 Inches  
 GANTRY RATED CAPACITY: 2000 Lbs.  
 MAXIMUM CANTILEVERED LOAD (B): 1200 Lbs.  
 GANTRY WEIGHT: 425.5 Lbs.  
 I-BEAM WEIGHT: 65 Lbs.



**PROPER CANTILEVER PROCEDURES**  
 Required counterweight should not be supported by gantry caster frame.

Load and trolley should be able to freely traverse the I-beam through the main legs and brace legs of the gantry.

REQUIRED COUNTERWEIGHT AT [C]

A	B	B	B	B	B	B
IN	200	400	600	800	1000	1200
FEET	LBS.	LBS.	LBS.	LBS.	LBS.	LBS.
1	0	0	0	0	13	57
2	0	0	95	195	295	395
2.5	0	64	198	331	464	598