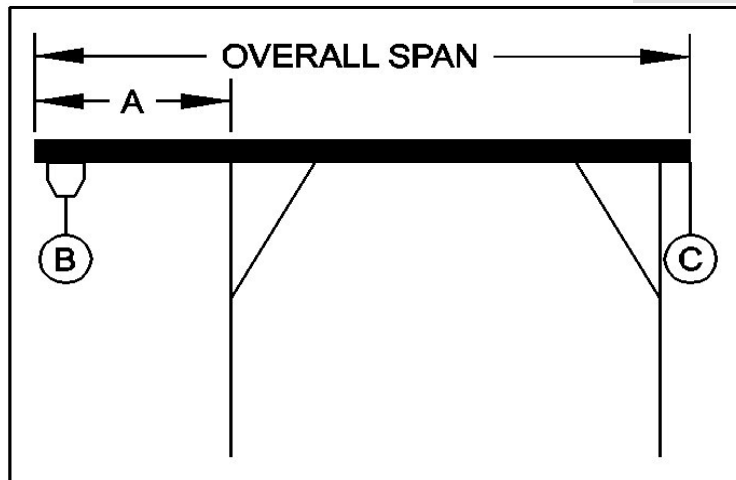




## PORTABLE CRANE CANTILEVER CHART

GANTRY MODEL NUMBER: A3T18D-A12  
 I-BEAM: Alu. 10" X 8.8#/' X 12'  
 I-BEAM LENGTH (OVERALL SPAN): 144 Inches  
 MAXIMUM CANTILEVER DISTANCE (A): 36 Inches  
 GANTRY RATED CAPACITY: 3000 Lbs.  
 MAXIMUM CANTILEVERED LOAD (B): 1800 Lbs.  
 GANTRY WEIGHT: 640 Lbs.  
 I-BEAM WEIGHT: 106 Lbs.



**PROPER CANTILEVER PROCEDURES**  
 Required counterweight should not be supported by gantry caster frame.

Load and trolley should be able to freely traverse the I-beam through the main legs and brace legs of the gantry.

### REQUIRED COUNTERWEIGHT AT [C]

A	B	B	B	B	B	B
IN	300	600	900	1200	1500	1800
FEET	LBS.	LBS.	LBS.	LBS.	LBS.	LBS.
1	0	0	0	0	0	12
2	0	0	50	170	290	410
3	0	97	297	497	697	897