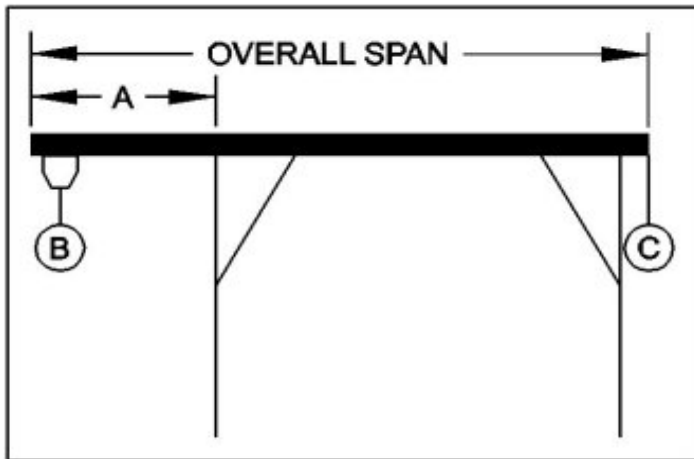




## WALLACE CRANES PORTABLE CRANE CANTILEVER CHART

GANTRY MODEL NUMBER: FHS211-S25AC  
 I-BEAM: S10" X 25.4#/' X 25'  
 I-BEAM LENGTH (OVERALL SPAN): 300 Inches  
 MAXIMUM CANTILEVER DISTANCE (A): 75 Inches  
 GANTRY RATED CAPACITY: 2000 Lbs.  
 MAXIMUM CANTILEVERED LOAD (B): 1200 Lbs.  
 GANTRY WEIGHT: 1204 Lbs.  
 I-BEAM WEIGHT: 635 Lbs.



**PROPER CANTILEVER PROCEDURES**  
 Required counterweight should not be supported by gantry caster frame.

Load and trolley should be able to freely traverse the I-beam through the main legs and brace legs of the gantry.

REQUIRED COUNTERWEIGHT AT [C]

A IN FEET	B 200 LBS.	B 400 LBS.	B 600 LBS.	B 800 LBS.	B 1000 LBS.	B 1200 LBS.
1	0	0	0	0	0	0
2	0	0	0	0	0	0
3	0	0	0	0	0	0
4	0	0	0	0	0	0
5	0	0	0	0	0	77
6	0	0	0	3	129	256
6.25	0	0	0	37	170	303