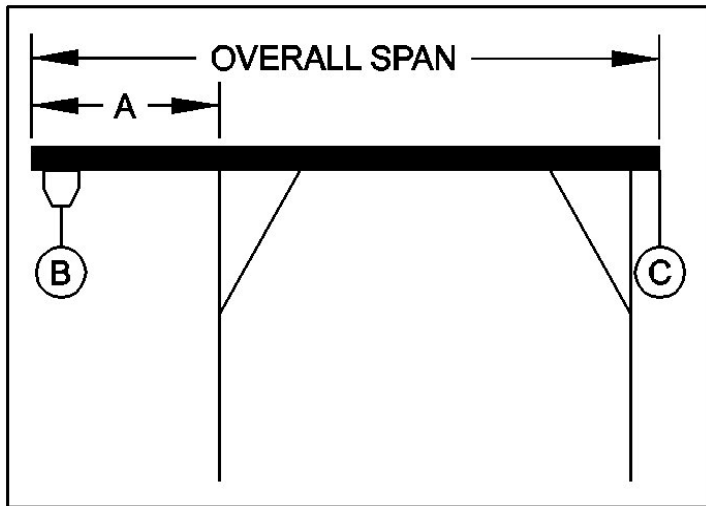




PORTABLE CRANE CANTILEVER CHART

GANTRY MODEL NUMBER: S2T12-A15AC
 I-BEAM: A10"X8.80#/'X15'
 I-BEAM LENGTH (OVERALL SPAN): 180 Inches
 MAXIMUM CANTILEVER DISTANCE (A): 45 Inches
 GANTRY RATED CAPACITY: 2000 Lbs.
 MAXIMUM CANTILEVERED LOAD (B): 1200 Lbs.
 GANTRY WEIGHT: 569.5 Lbs.
 I-BEAM WEIGHT: 134 Lbs.



PROPER CANTILEVER PROCEDURES
 Required counterweight should not be supported by gantry caster frame.

Load and trolley should be able to freely traverse the I-beam through the main legs and brace legs of the gantry.

| A | B | B | B | B | B | B |
|------|------|------|------|------|------|------|
| IN | 200 | 400 | 600 | 800 | 1000 | 1200 |
| FEET | LBS. | LBS. | LBS. | LBS. | LBS. | LBS. |
| 1 | 0 | 0 | 0 | 0 | 0 | 0 |
| 2 | 0 | 0 | 0 | 0 | 33 | 94 |
| 3 | 0 | 0 | 31 | 131 | 232 | 332 |
| 3.75 | 0 | 4 | 137 | 270 | 404 | 537 |